



#LifeAtXIMEKochi

# QUEST

National Level Management Fest

**XIME**  
Shaping Future Leaders

Kochi

12<sup>th</sup> & 13<sup>th</sup>  
— March —





# GREETINGS FROM XIME

The doors to discovery open once again as XIME Kochi presents Quest '26- an invitation to unlock potential, embrace challenge, and embark on a journey where learning feels magical. This year, March 12 and 13, Quest invites you to step beyond the ordinary and into a world where ambition meets enchantment, and learning feels nothing short of magical.

At its heart, Quest is a journey- a pursuit of knowledge, challenge, and discovery. Inspired by the wizarding world, this edition reimagines competition as a series of trials where wit, courage, teamwork, and imagination take center stage. Across management, cultural, and sports arenas, carefully crafted events await those who are ready to test their skills and master the art of leadership.

Quest is more than a fest; it is a meeting of minds. It brings together students from institutions across the country to connect, collaborate, and exchange ideas- building bonds that extend beyond competition and shaping perspectives that last long after the event.

Step forward, take your place, and be part of a journey where creativity is unleashed, potential is revealed, and future leaders emerge. Here, we promise an experience that is bigger in vision, stronger in spirit, and richer in magic.

**Welcome to Quest '26-**

where the pursuit begins, and legends are made.



**Kochi**

# ABOUT XIME

Xavier Institute of Management & Entrepreneurship (XIME) is a place shaped by purpose, people, and a strong belief in quality education. Founded by a group of distinguished academicians and professionals led by Prof. J. Philip, former Director of IIM Bangalore and former Dean of XLRI, Jamshedpur, XIME has grown into one of India's respected B-Schools. Today, its campuses in Bangalore, Kochi, and Chennai continue this legacy across South India.

The Kochi campus began its journey in 2013 with a clear vision- to prepare students for meaningful careers in management. Located in the dynamic business hub of Kalamassery, close to the renowned Start-up Village, XIME Kochi stands at the intersection of academia and industry. Its EFMD-accredited PGDM programme reflects a strong commitment to global standards in management education. Through strategic collaborations with leading international universities, the campus offers meaningful global exposure via exchange programs, enabling students to engage with diverse business cultures and contemporary global practices.





# ABOUT QUEST 2026

As the light rises within halls of thought and ambition, Quest 2026 brings together curious minds, bold ideas, and endless possibilities. It invites those who dare to think deeper, compete sharper, and imagine bigger- into a space where learning feels alive and every challenge has purpose.

Students from diverse backgrounds come together, each carrying their own stories, strengths, and perspectives. Differences don't divide here; they blend, sparking curiosity, building connections, and shaping experiences that stay long after the fest ends.

Through challenges that test strategy, teamwork, resilience, and clarity, Quest becomes a stage for competition, collaboration, and celebration. Step forward and take your place- Quest 2026 is more than an event; it's a journey that leaves you with memories and momentum.



## MISSION

To build a space where curiosity grows, ideas connect, and collaboration inspires learning. Through meaningful challenges, Quest shapes future leaders with insight, integrity, and imagination, preparing them to create lasting impact in society and beyond.

## VISION

To create a platform where aspiring managers grow, connect, and lead- blending innovation with values to shape future-ready leadership.





# GENERAL GUIDELINES

1. All participants must carry their college identity cards for verification.
2. Discipline and decorum are expected to be maintained throughout the fest.
3. Participants are reQuested to follow a decent and appropriate dress code.
4. Mobile phone usage during events is strictly prohibited, unless explicitly permitted by the organizers.
5. The consumption or possession of alcohol, cigarettes, or any prohibited substances on campus is strictly forbidden.
6. XIME-issued ID cards must always be worn within the campus premises.
7. Accommodation support is available at the following rates:
  - Non-A/C Room: Rs. 499 per head per night
  - A/C Room: Rs. 649 per head per night(Both options include 2 days of transportation.)
8. A team is permitted to participate in only one management event.
9. Any form of misconduct or violation of rules will result in immediate disqualification.
10. Early Bird Special: Register by February 20th to unlock exclusive benefits. Early registrants will enjoy special incentives, including food coupons and exciting goodies.

## OVERALL CHAMPIONSHIP TROPHY

As Quest 2026 presents the Overall Championship Trophy, the following criteria will determine the winning college:

- Total footfall representing each college
- Positions secured by the college teams across various events
- Social media promotions with official XIME Kochi and Quest 2026 tags



# MANAGEMENT EVENT

As the gates of Quest open, participants step into challenges that test wit, strategy, and leadership. Across strategy, finance, marketing, operations, and HR, each event sharpens decision-making, teamwork, and composure- where every challenge conquered brings you closer to mastery.



## The Goblet of Champions

(Best Manager)

Prize Worth - 22,000/-



## Founder's Spellbook

(B-Plan)

Prize Worth - 30,000/-



## Phoenix Reign — Spell Ops

(Operations)

Prize Worth - 18,000/-



## The Wizards of Wall Street

(Finance)

Prize Worth - 18,000/-



## The Triwizard Marketing Tournament

Prize Worth - 18,000/-



## Order of The Pheonix

(HR Event)

Prize Worth - 17,500/-





# CULTURAL & CREATIVE EVENT

As the lights rise, the Cultural and Creative arena comes alive with art in motion. Through rhythm, style, and storytelling, participants perform, create, and captivate- turning passion into presence and talent into unforgettable moments.





# SPORTS EVENT

As the whistle blows, the Sports Arena comes alive with strength, speed, and spirit. These contests test endurance, teamwork, and resolve- where every move matters and victory is earned through grit.



## THE GOLDEN SNITCH-OFF (FOOTBALL)

Prize Worth - 9,000/-



## HOOPS & HALLOWS (BASKETBALL)

Prize Worth - 9,000/-



## SHUTTLES & SPELLS (BADMINTON)

Prize Worth - 5,000/-



## THE WIZARD'S CREASE (CRICKET)

Prize Worth - 5,000/-



# THE MAKERS' CORNER

## Not Just Watched. Crafted by You.

“Words are, in my not-so-humble opinion, our most inexhaustible source of magic.”

But some magic doesn't come from words at all- it begins the moment you get your hands involved.

At Quest 2026, not every experience is meant to be seen from a distance. Some are meant to be touched, shaped, painted, and taken home. The Makers' Corner is where ideas slow down, and curiosity finally gets time to breathe.

It is a space filled with pottery, painting, face painting, and simple DIY art activities- not as displays, but as invitations. Sit down at a wheel, pick up a brush, try your hand at face painting with friends, or explore creative DIY tables at your own pace. No instructions to follow, no pressure to get it right.



### HANDS SHAPE

Clay into quiet keepsakes.



### COLOURS FLOW

Freely, no rules attached.



### STORIES PAINTED

Smiles shared.



### CREATE SOMETHING

Personal. Take it home.

**Because at Quest 2026,**

Some experiences don't end when the fest does- they stay with you.





# THE GREAT FEAST

22 States. One Magical Plate.

“Anything off the trolley, dears?”  
No, we have something much better

You don’t need a spell book to find the best  
food in India.

**You just need to be at Quest 2026.**

At XIME Kochi, our campus is a living tapestry of 22 states, their languages, and a plethora of traditions, shaped by where we come from. Yet there is one magic that binds us all together: food that feels like home. As they say, “It does not do to dwell on dreams and forget to eat.”

As part of the National Level Management Fest- Quest 2026, the campus transforms into the Great Hall of Flavours. Take a culinary journey through the diverse flavors of South, North, West, and East, highlighting dishes like soothing biryanis and enchanting desserts. At Quest, the experience is about shared meals and warm conversations, reminiscent of the magic of Hogwarts, emphasizing that help and food are always available for those who seek it.

Whether you come to explore new flavours or simply enjoy the ones you love, the Food Festival welcomes everyone. Come hungry, leave smiling, and carry a little bit of India with you.

**Because at Quest 2026,**

Every flavour has a story- and every story is worth tasting.





# THE EVENING GALA

## Where the Fest Unwinds

When the day's events come to an end, Quest 2026 shifts into celebration



### Acoustic Open Mic

*Songs, poetry, guitars, and voices take the stage.*

Some planned, some spontaneous – every performance is welcomed with applause.

### Zumba & Salsa Social

*No steps to remember, no experience required.*

Just music, movement, and people enjoying the moment together



### DJ Night

*Lights go up, beats drop, and the fest finds its rhythm.*

Friends celebrate, teams unwind, and laughter carries into the night.

**Because at Quest 2026,**

Some nights are meant to be remembered.

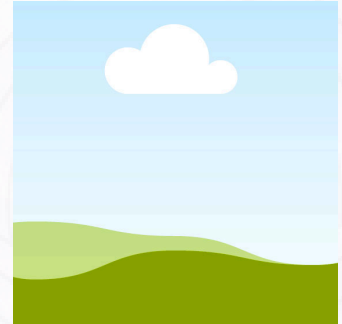


# REGISTER NOW



## Step 1: Visit & Register

Click here or scan the QR code to visit the official Quest 2026 registration website.



## Step 2: Choose Your Event

Choose the event you wish to participate in and fill in your registration details.



## Step 3: Confirm & Submit

Complete the payment securely on the website and submit your registration to receive confirmation.

The gates to Quest now stand open. Step forward, claim your place, and begin a journey where every challenge feels enchanted and every opportunity awaits discovery.

### PR Coordinators

Sudeshna Shyam: +91 702219002

Victor Varghese: +91 7909112577



**XIME**  
Shaping Future Leaders

Kochi

## EVENT COORDINATORS

Swapnil Patel +91 9316439664

Krishnendu Pillai +91 9462514528



**XIME**  
Shaping Future Leaders

Kochi

[www.Quest2026.com](http://www.Quest2026.com)